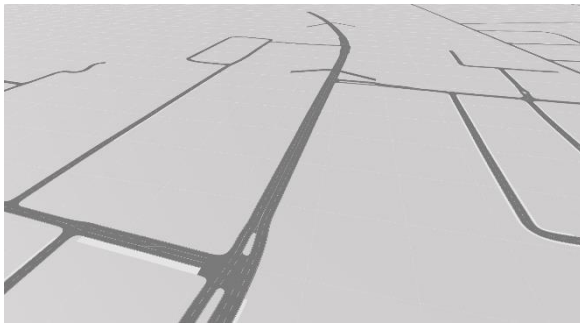




**We automate
HD-map creation.**

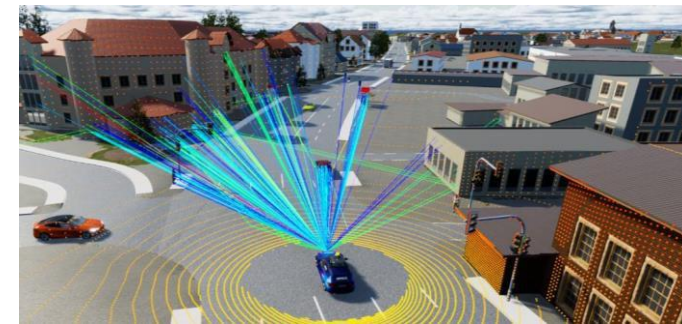
AVES Reality in a nutshell: OpenDRIVE maps and synthetic 3D environments



HD-roadmaps, based on real-world locations



3D environment models around HD-map, based on real-world locations



Integration in automotive simulation tools & supplemental 3D engineering services

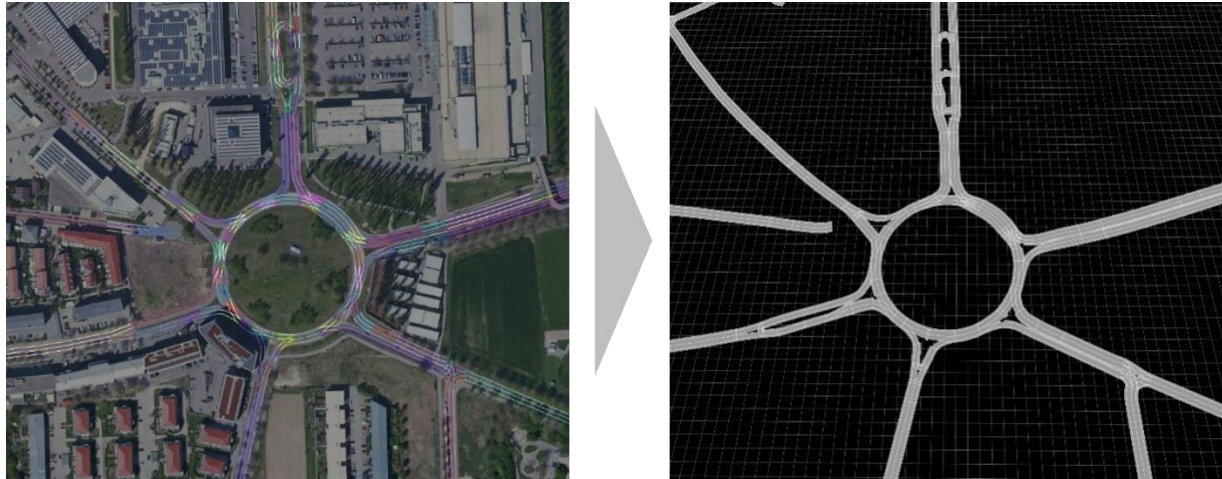
Supported simulation providers so far:

 [full integration]

 [almost full integration]

 [improving integration]

AVES Services: Creation and Editing on-demand



HD-maps

OpenDRIVE including elevation data



3D environments

Based on real-world geospatial data
Optimized for various simulation tools

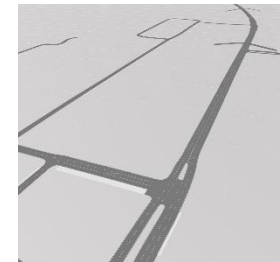
AVES Launcher: HD-map generation for any road on earth



1. Choose any place on a map



2. Receive multiple km² of respective
openDRIVE map within minutes



AVES Launcher: HD-map generation for any road on earth



Cloud-based, collaborative road editing tool
Subscription-based HD-map & 3D creation

- Generate OpenDRIVE maps
 - *automated map creation*
 - *including elevation data*
- Import & Edit OpenDRIVE
 - *native OpenDRIVE editing*
- Create 3D road mesh
- Export OpenDRIVE and 3D road mesh

AVES Launcher: HD-map generation for any road on earth

Beta release in winter 2023!

Sign up for the AVES Launcher beta waitinglist on our website!

Come by our booth for a live demo!



Increasing accuracy and updateability
with your next evolution step:

AI-enabled HD-map generation
from **satellite imagery**

Want to talk?

We are looking for partners and collaborative use cases!



Florian Albert

CEO | Co-Founder

florian.albert@avesreality.com

[linkedin.com/in/florianalbert](https://www.linkedin.com/in/florianalbert)

+49 171 4188074



AVES REALITY

AVES Reality GmbH

Mittenwalderstraße 39
82467 Garmisch-Partenkirchen
Germany

www.avesreality.com